

O.Y.



It was fun creating a map with friends. I learned a lot from people in Mihama. They were so kind. This project was a lot of fun.

J.S.



It was good to learn about things I normally don't know and to learn more about my hometown. It was fun to move around and think while talking with friends. My recommended spot is Ebisenbei no Sato. It is very interesting because you can experience and see how they are made! Thank you to the people of Mihama for helping me with this interview.

R.Y.



This time, we made a map of Mihama Town, which allowed us to feel the charm of this town. Conversely, we did not know much about this town until we did this activity. Since we were unfamiliar with the town and made this map from scratch, we made it with those who were unfamiliar with the town in mind. We hope that more people will use this map because it is an easy way to learn about Mihama Town. And to the people of Mihama Town, thank you very much for your kind cooperation.

Y.T.



I'm incredibly grateful to the people of Mihama for entrusting us with the creation of this map and for their support throughout the process! This was quite a fun project and I learned a lot about Mihama that I didn't know previously, giving me a deeper understanding and appreciation for this town. Come visit anytime!!

H.W.



Creating a map was a new experience, and it was a great opportunity to rediscover the charm of Mihama Town with excitement. I highly recommend Dorayaki Sea Dragon; during my visit for coverage, the calm and soothing atmosphere, along with the delicious dorayaki, left a lasting impression. Lastly, thanks to everyone who kindly cooperated with the interview, I believe we've created a map that can share the charm of Mihama Town with many people. Thank you very much.

K.S.



Through creating a map, I discovered many delicious foods and beautiful buildings in Mihama Town. It's great to know a lot about Mihama Town. I highly recommend the Whole Cafe near the sea; the view is amazing! Thanks to everyone in Mihama Town for your cooperation!

S.S.



Making a map in English was very difficult, but I was able to cooperate with everyone and enjoy making it. Also, the staff from the shops that we visited were very kind, and I would like to visit again. Thank you very much to everyone we interviewed and to everyone who cooperated. I hope people from overseas will enjoy using the map we made!

K.K.



For the first time, I have done everything from making an appointment to conducting interviews. It was all new to me and I was very nervous. However, the people at the store were kind enough to ease my nervousness and made me want to go again. We all worked together to create this map, which was a lot of fun and gave us a sense of accomplishment.

N.U.



Thank you to the people of Mihama Town for their cooperation. Through this interview, we were able to learn more about Mihama Town, where our school is located. I learned that Mihama Town, which is rich in nature, is famous for its fresh and delicious seafood. So, when you come to Mihama Town, please try it out!

R.O.



I made a map in English for the first time, and creating sentences was quite challenging. However, conducting interviews and crafting sentences turned out to be a lot of fun! The people at Uotaro was also very kind, and I'm delighted that the goodness of Japanese seafood is being conveyed! It was a very positive experience!

R.S.



Through this activity, we were able to learn about Mihama Town that we did not know before. Please take a look at our recommended spots. Thank you very much for your cooperation.

S.I.

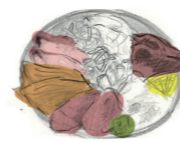
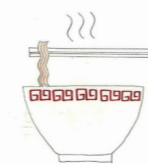
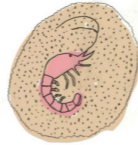
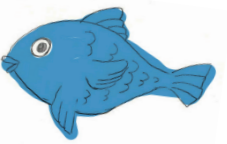


I'm happy to be able to share the charm of Mihama Town with many people through creating the map. My recommendation is Kamenoi Hotel, where you can get a great view of the sea from the restaurant. Thank you so much to everyone in Mihama Town for your cooperation.

MIHAMA TOWN



TOURIST MAP



普通科
日本福祉大学附属高等学校 GLOBAL COURSE
Nihon Fukushi University Affiliated High School

MIHAMA TOWN

TOURIST MAP

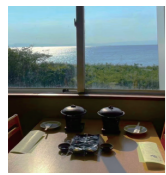


01 Minamichita Beach Land



Located just a 10-minute walk from Chitaokuda Station, it is the only aquarium within the Chita Peninsula. Alongside the aquarium, there is also an area for children to enjoy. Be sure to catch the cute sea lion show and powerful dolphin performance.

02 Kamenoi Hotel



A free shuttle bus service is available from Chitaokuda Station for convenient access. The hot spring baths, which can be used for day trips, offer a view of the ocean. You can also enjoy the beautiful ocean view from the restaurant.

03 Koinomizu Shrine



20-minute walk from Chitaokuda Station, famous for being a matchmaking shrine. Omamori (talisman) for marriage and other items are available for sale. There is a special way to pray: buy a paper cup, write your wish or name on the cup, scoop water with a ladle, pour about half of it into the cup, and offer it to the deity.

04 Todai Ramen



Look for the lighthouse near the restaurant! It is just a 10-minute bike ride from Chitaokuda Station. Todai Ramen offers a wide variety of dishes with generous portions at reasonable prices. Be sure to try the crowd favorite, the "Yasai Tappuri Todai Ramen (Todai Ramen with plenty of vegetables)".

05 Whole Cafe



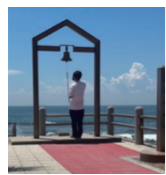
The most recommended is the cheesecake. You are also welcome to bring your pets along. The shop is very stylish and offers a view of the ocean. They use locally sourced ingredients and everything in the shop is handmade.

06 Nomadaibo Temple



A place with many buildings designated as important cultural properties. The grave of Minamoto-no-Yoshitomo, a historical figure during the Heian period (794-1185) is also situated within the temple. The temple priest offer explanations about the history of Nomadaibo for a fee.

07 Nomasaki Lighthouse



The nearby ocean attracts many couples who visit to enjoy its beauty. On site, there is a Love Lock that symbolizes the bond of love and a bell called the "kizuna no kane" (bonding bell), where individuals ring to pledge their eternal love. During special events, the lighthouse is also open for visitors to climb.

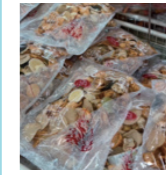
08 Shoku to Kenko no Yakata



Have you ever eaten sea salt ice cream? This ice cream uses salt made in-house. Visitors can also explore a range of workshops, check out the salt-making structure, browse a variety of local products and agricultural produce, and dine at the restaurant.



09 Ebisenbei-no-Sato



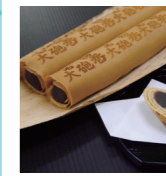
There are many varieties of shrimp crackers, offering a fun experience to select your favorites. Indulge in seasonal products such as caramel rice crackers in summer and chocolate rice crackers in winter. Their top three best sellers are the Ebisen Iroiro (assortment), Ebi Mirin Age, and the Hamasen Ebi Usuyaki.

10 Utsumi Shokudo



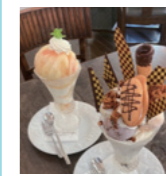
A Shokudo (Japanese diner style) and Teishoku (Japanese set meals) restaurant, specializing in a variety of dishes centered around seafood. The most popular option is the Kaisen-donburi, a bowl of rice topped with beautifully assorted sashimi. Highly recommended!

11 Amebun



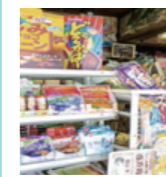
This confectionery store has over 150 years of history and sells various kinds of Japanese sweets, including Chita Peninsula's famous product: Taihou-maki. Taihou-maki is a Japanese pastry filled with sweet bean paste and wrapped in something akin to a crepe. There are about 5 flavors available, including matcha, chestnut, and white bean. In addition to Taihou-maki, there are various sweets like Warabi Mochi and Kuzugori.

12 Au Fraisvert Radieux



This vibrant cafe offers a variety of cakes and desserts, along with fancy drinks and brunch. It is known for its parfaits, and there are more than 10 types of seasonal selections. One of them is the Mihama Sunrise Parfait, featuring high-grade mikan, salt from the surrounding sea, lemons produced in the town, and 3 types of ice cream. The Chocolate Parfait is simply perfect as well!

13 Tamaya



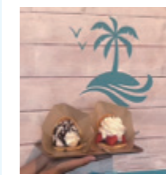
A retro sweet store that has been running since 1950 during the Showa era. Here, you can immerse yourself in Japan's traditional atmosphere. There is a wide variety of products, from traditional Dagashi such as "Peperoncino-fugashi" and "Cocoa-cigarettes" to anime goods.

14 Uotaro



A seafood market where you can buy fish fresh from the port. There is also a dining area where you can enjoy delicious dishes such as Ikura and Shirasu rice bowl, fried shrimp, and the staff's top recommendation - the sashimi set. Furthermore, the staffs are experts in their field and can offer guidance on the finest seasonal selections.

15 Dorayaki Sea Dragon & Blue Ocean Coffee



Best to consume within 5 minutes! The cream used in the dorayaki is special and is at its peak when savored fresh. There are many flavors of dorayaki available, such as matcha (green tea), strawberry, and seasonal options like apple and shine muscat. The most popular item is the Icedora (ice cream dorayaki).